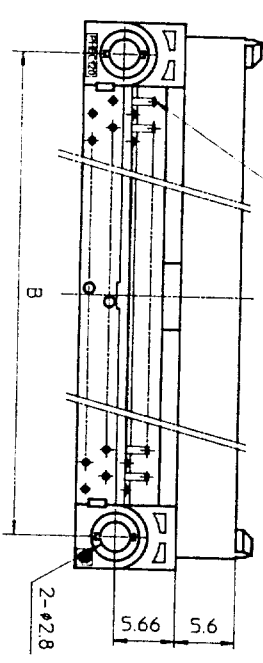
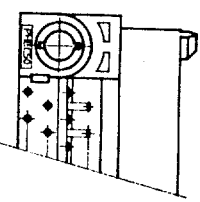


NO. OF CONTACTS: 40,60,68,80,100,120
CRITERION PIN



NO. OF CONTACTS: 30,34,50



MATERIAL

BODY

LOCATOR

CONTACT

MOUNTING LATCH

SCREW NUT

STEEL

NICKEL PLATED

CAT. NO.	NO. OF CONTACTS (MATING SIDE)	DIMENSIONS				
		A	B	C	D	E
PHEC30P-R21	15/ROW X 2 ROWS	32.67	26.67	30.3	20.42	17.78
PHEC34P-R21	17/ROW X 2 ROWS	35.21	29.21	32.84	22.96	20.32
PHEC40P-R21	20/ROW X 2 ROWS	39.02	33.02	36.65	26.77	24.13
PHEC50P-R21	25/ROW X 2 ROWS	45.37	39.37	43	33.12	30.48
PHEC60P-R21	30/ROW X 2 ROWS	51.72	45.72	49.35	39.47	36.83
PHEC68P-R21	34/ROW X 2 ROWS	56.8	50.8	54.43	44.55	41.91
PHEC80P-R21	40/ROW X 2 ROWS	64.42	58.42	62.05	52.17	49.53
PHEC100P-R21	50/ROW X 2 ROWS	77.12	71.12	74.75	64.87	62.23
PHEC120P-R21	60/ROW X 2 ROWS	89.82	83.82	87.45	77.57	74.93

TOLERANCES UNLESS OTHERWISE SPECIFIED: ±0.3

CONTACT PLATING TABLE (THICKNESS: μm)

CONTACT AREA	REMAINDER
GOLD 0.25 MIN.	SOLDER
OVER NICKEL 3Z	OVER NICKEL

DRAWING NO. JSC 90736

PRINTED CIRCUIT CONNECTOR

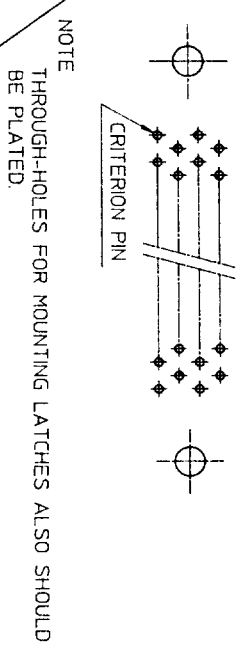
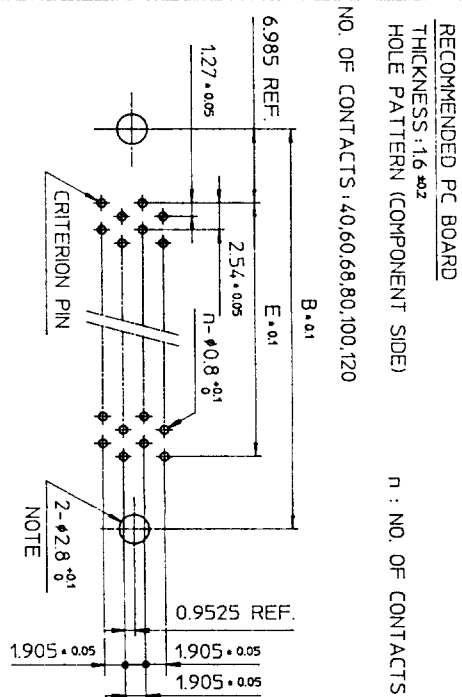
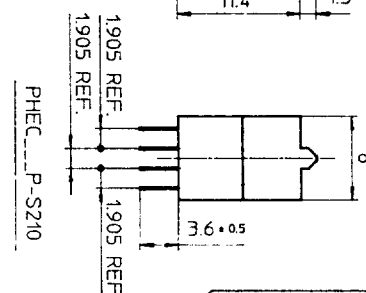
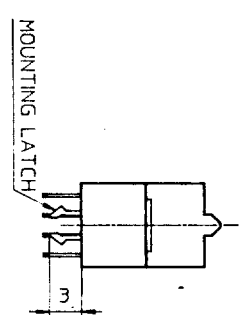
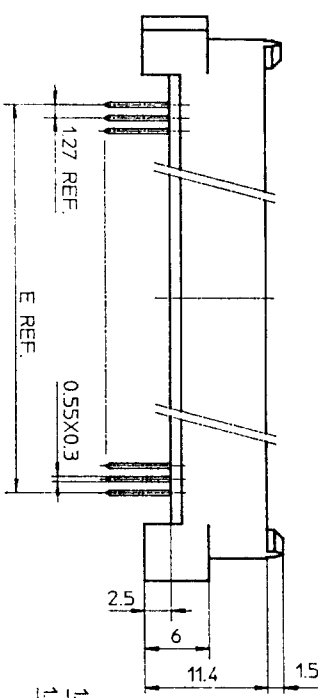
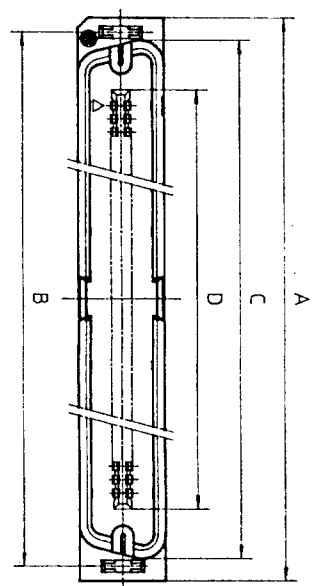
CAT. NO.	PHEC___P-R21_
DRAWING NO.	JSC 90736
REV	3

BURNDY
JAPAN Ltd.

DESIGNED	
DRAWN	M. Oba
CHECKED	A. Ely
APPROVED	J. Koyashiro
DATE	Mar. 8, 1990

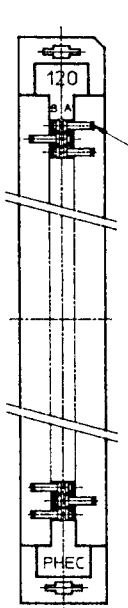
SCALE	
DIM. IN	mm
MATERIAL	

REV	DATE	DESCRIPTION	CKD
3	'92-8-14	30,34,50,68 POSITIONS ADDED. LOCATOR MATERIAL ADDED.	M.O
2	'90-6-7	EC 7866	M.O
1	'90-4-20	EC 7837	M.O

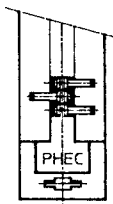


TOLERANCES UNLESS OTHERWISE SPECIFIED: ±0.3

NO. OF CONTACTS: 40,60,68,80,100,120



NO. OF CONTACTS: 30,34,50



CAT. NO.	NO. OF CONTACTS (MATING SIDE)	DIMENSIONS				
		A	B	C	D	E
PHEC30P-S21	15/ROW X 2 ROWS	34.55	31.75	30.3	20.42	17.78
PHEC34P-S21	17/ROW X 2 ROWS	37.09	34.29	32.84	22.96	20.32
PHEC40P-S21	20/ROW X 2 ROWS	40.9	38.1	36.65	26.77	24.13
PHEC50P-S21	25/ROW X 2 ROWS	47.25	44.45	43	33.12	30.48
PHEC60P-S21	30/ROW X 2 ROWS	53.6	50.8	49.35	39.47	36.83
PHEC68P-S21	34/ROW X 2 ROWS	58.68	55.88	54.43	44.55	41.91
PHEC80P-S21	40/ROW X 2 ROWS	66.3	63.5	62.05	52.17	49.53
PHEC100P-S21	50/ROW X 2 ROWS	79.0	76.2	74.75	64.87	62.23
PHEC120P-S21	60/ROW X 2 ROWS	91.7	88.9	87.45	77.57	74.93

MATERIAL

INSULATOR: NYLON RESIN GLASS REINFORCED (UL94V-0)
COLOR: BLACK

CONTACT: COPPER ALLOY

MOUNTING LATCH: PHOSPHOR BRONZE
SOLDER PLATED

CONTACT PLATING TABLE

CONTACT AREA	REMAINDER
GOLD 0.25 MIN	SOLDER
OVER NICKEL 32	OVER NICKEL

PRINTED CIRCUIT CONNECTOR

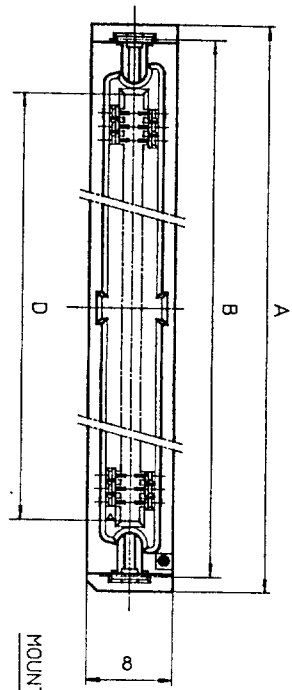
CAT. NO.	PHEC_P-S21
DRAWING NO.	JSC 90735
REV	3

BURNDY
JAPAN, Ltd.

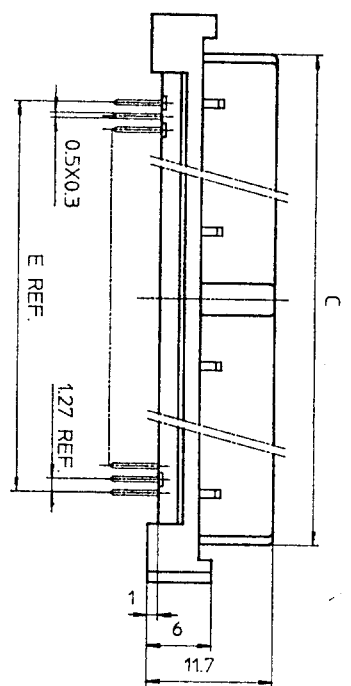
DESIGNED	
DRAWN	M. Oba
CHECKED	A. Chy
APPROVED	J. Toyoshita
DATE	Mar. 8, 1990

SCALE	1:1
DIM. IN	mm
MATERIAL	

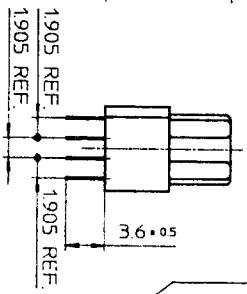
REV	DATE	DESCRIPTION	CHKD
3	8-11-92	30,34,50,68 POSITIONS ADDED.	
2	6-5-90	EC 7866	
1	4-20-90	EC 7837	



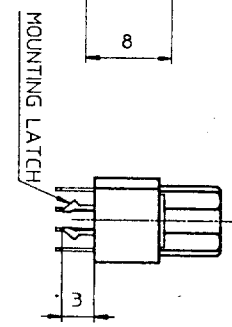
PHEC...R-S211



PHEC...R-S210

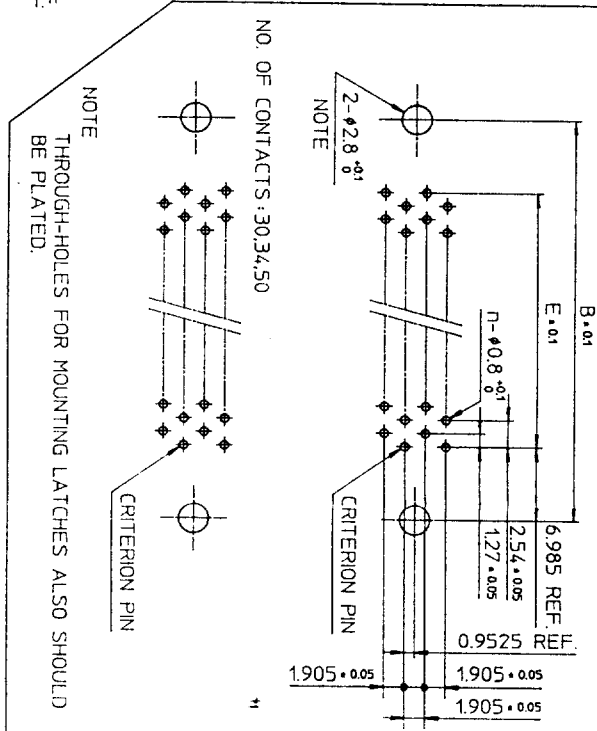


PHEC...R-S210



PHEC...R-S211

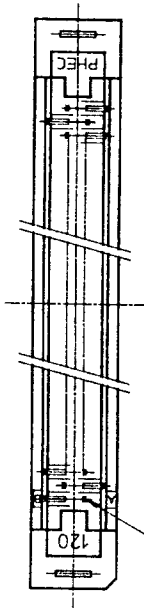
RECOMMENDED PC BOARD
 THICKNESS: 1.6 ± 0.2
 HOLE PATTERN (COMPONENT SIDE)
 NO. OF CONTACTS: 40,60,68,80,100,120
 n: NO. OF CONTACTS



NOTE
 THROUGH-HOLES FOR MOUNTING LATCHES ALSO SHOULD BE PLATED.

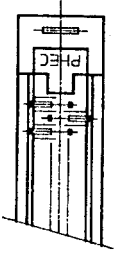
TOLERANCES
 UNLESS OTHERWISE SPECIFIED: ±0.3

NO. OF CONTACTS: 40,60,68,80,100,120



CRITERION PIN

NO. OF CONTACTS: 30,34,50



MATERIAL

INSULATOR: PBT RESIN GLASS REINFORCED (UL94V-0)
 COLOR: BLACK

CONTACT: PHOSPHOR BRONZE

MOUNTING LATCH: PHOSPHOR BRONZE
 SOLDER PLATED

CAT. NO.	NO. OF CONTACTS (MATING SIDE)	DIMENSIONS				
		A	B	C	D	E
PHEC30R-S21	15/ROW X 2 ROWS	34.55	31.75	27.26	21.26	17.78
PHEC34R-S21	17/ROW X 2 ROWS	37.09	34.29	29.8	23.8	20.32
PHEC40R-S21	20/ROW X 2 ROWS	40.9	38.1	33.61	27.61	24.13
PHEC50R-S21	25/ROW X 2 ROWS	47.25	44.45	39.96	33.96	30.48
PHEC60R-S21	30/ROW X 2 ROWS	53.6	50.8	46.31	40.31	36.83
PHEC68R-S21	34/ROW X 2 ROWS	58.68	55.88	51.39	45.39	41.91
PHEC80R-S21	40/ROW X 2 ROWS	66.3	63.5	59.01	53.01	49.53
PHEC100R-S21	50/ROW X 2 ROWS	79.0	76.2	71.71	65.71	62.23
PHEC120R-S21	60/ROW X 2 ROWS	91.7	88.9	84.41	78.41	74.93

CONTACT PLATING TABLE

(THICKNESS: μm)

CONTACT AREA	REMAINDER
GOLD 0.25 MIN. OVER NICKEL 3.2	SOLDER OVER NICKEL

DRAWING NO. JSC 90737

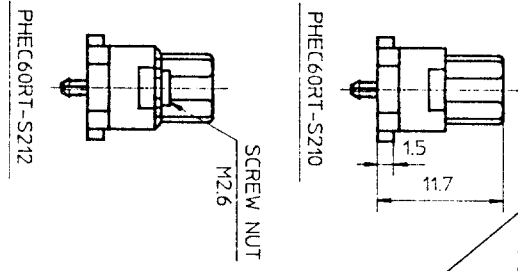
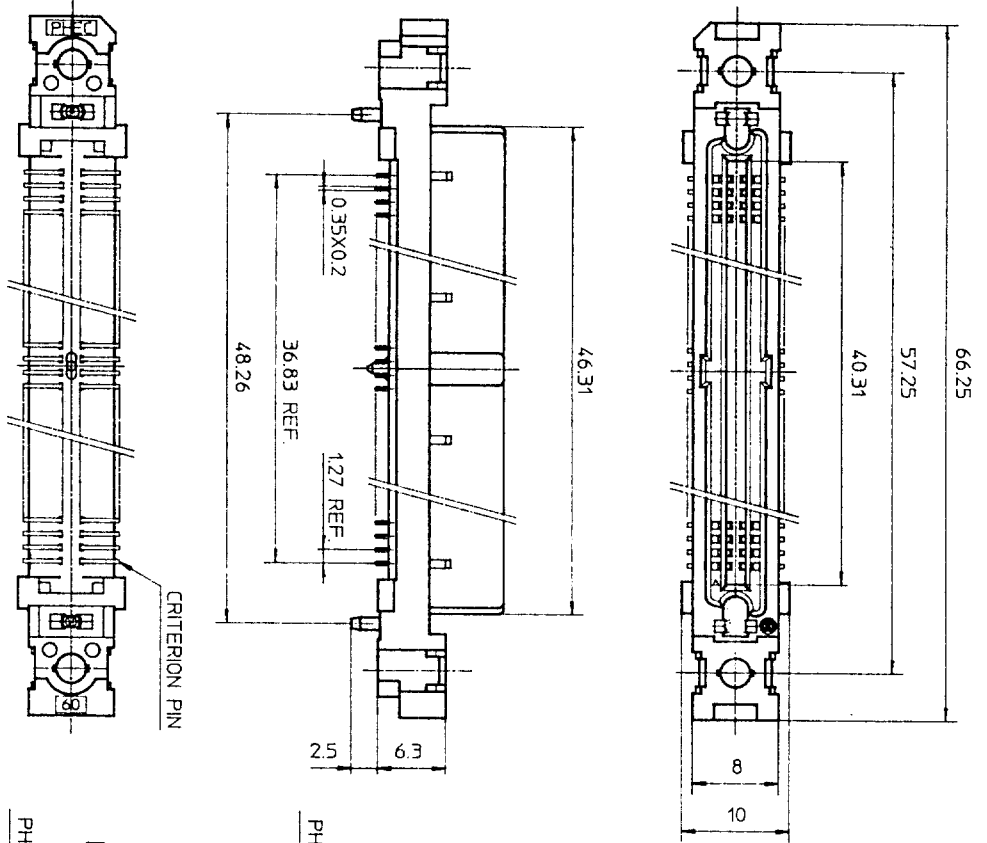
PRINTED CIRCUIT CONNECTOR
 CAT. NO. PHEC...R-S211
 DRAWING NO. JSC 90737
 REV. 4
BURNDY JAPAN Ltd.

DESIGNED
 DRAWN *M. Oba*
 CHECKED *A. Ebi*
 APPROVED *J. Hasegawa*
 DATE Mar. 8, 1990

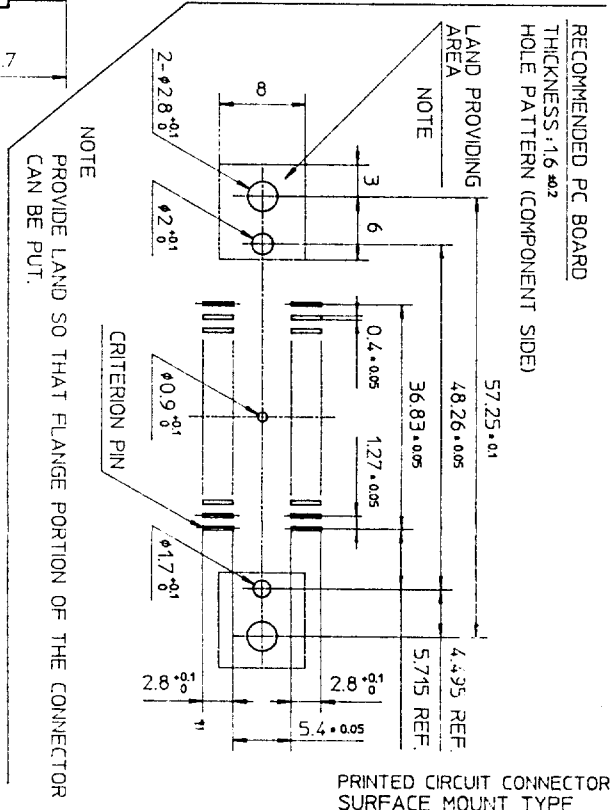
SCALE
 DIM. IN mm
 MATERIAL

REV	DATE	DESCRIPTION	CKD
3	8-11-92	30,34,50,68 POSITIONS ADDED	<i>no S.P</i>
2	5-30-90	EC 7866	<i>no JK</i>
1	4-20-90	EC 7837	<i>no JK</i>

DRAWING NO. JSC 90739



MATERIAL
 INSULATOR : PPS RESIN GLASS REINFORCED (UL94V-0)
 COLOR : BLACK
 CONTACT : PHOSPHOR BRONZE
 SCREW NUT : STAINLESS
 NO. OF CONTACTS : 30/ROW X 2 ROWS (MATING SIDE)



RECOMMENDED PC BOARD THICKNESS : 1.6 ± 0.2 HOLE PATTERN (COMPONENT SIDE)

CONTACT PLATING TABLE (THICKNESS : μm)

CONTACT AREA	REMAINDER
GOLD 0.25 MIN. OVER NICKEL 3.2	SOLDER OVER NICKEL

TOLERANCES UNLESS OTHERWISE SPECIFIED : ±0.3

PRINTED CIRCUIT CONNECTOR SURFACE MOUNT TYPE

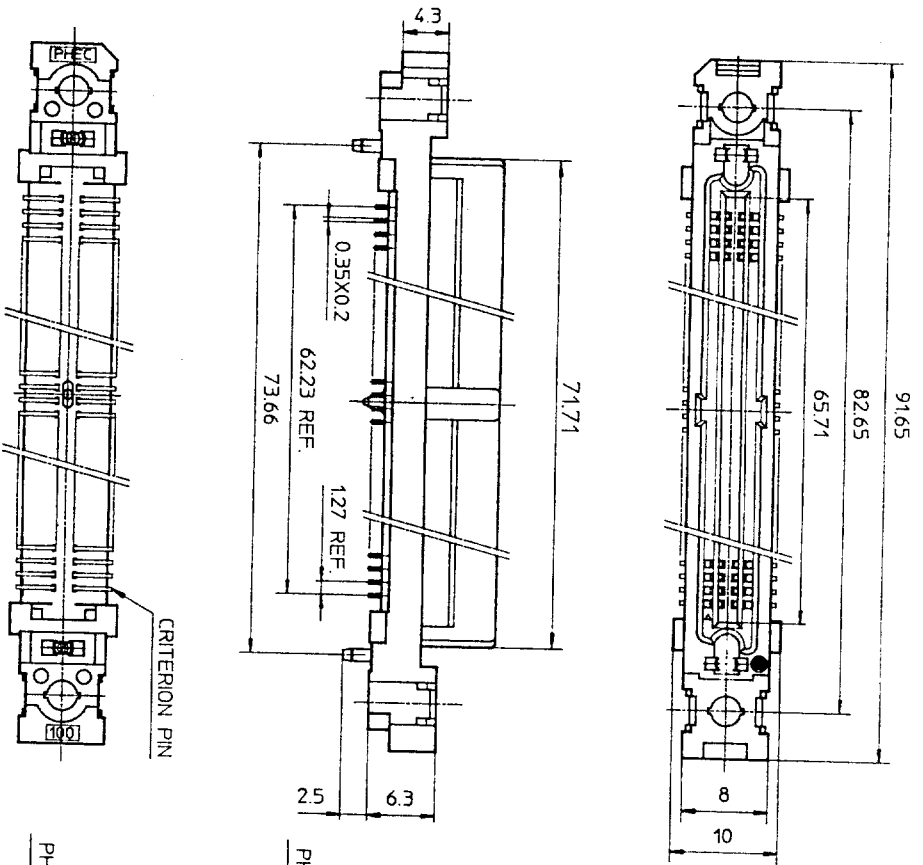
REV	DATE	DESCRIPTION	CKD
4	'92 8-14	WRONG CONTACT DIM. CORRECTED 100 POSITIONS OF DELETED.	M.S.
3	'92 1-8	DIM. CHANGED.	JK
2	'90 6-8	EC7866	JK
1	'90 4-20	VARIATION ADDED.	JK

SCALE : 1/2
 DIM IN : MM
 MATERIAL :

DESIGNED :
 DRAWN : M. Osa
 CHECKED : A. Eb
 APPROVED : J. Kobayashi
 DATE : Mar. 8, 1990

CAT. NO. PHEC60RT-S21_
 DRAWING NO. JSC 90739
 REV. 4





91.65

82.65

65.71

71.71

0.35X0.2

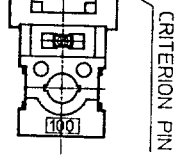
62.23 REF.

1.27 REF.

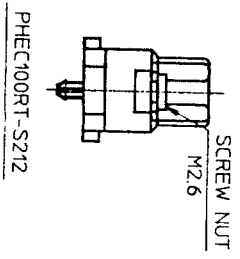
73.66

25

6.3



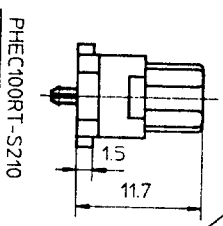
CRITERION PIN



PHEC100RT-S212

M2.6

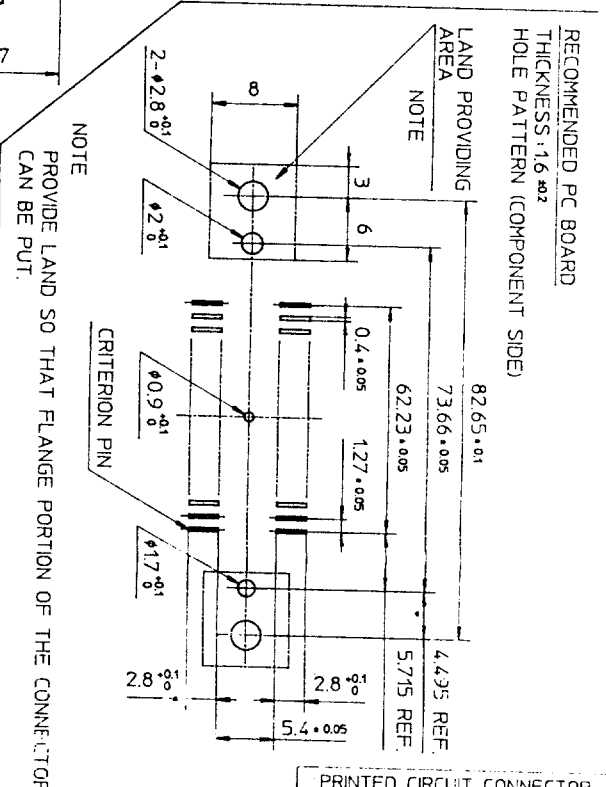
SCREW NUT



PHEC100RT-S210

1.5

11.7



RECOMMENDED PC BOARD

THICKNESS: 1.6 ±0.2

HOLE PATTERN (COMPONENT SIDE)

82.65 ±0.01

73.66 ±0.05

62.23 ±0.05

1.27 ±0.05

0.4 ±0.05

5.715 REF.

4.435 REF.

5.4 ±0.05

2.8 ±0.1

2.8 ±0.1

2.8 ±0.1

2.8 ±0.1

2.8 ±0.1

2.8 ±0.1

2.8 ±0.1

2.8 ±0.1

2.8 ±0.1

2.8 ±0.1

2.8 ±0.1

2.8 ±0.1

2.8 ±0.1

2.8 ±0.1

2.8 ±0.1

2.8 ±0.1

2.8 ±0.1

2.8 ±0.1

2.8 ±0.1

2.8 ±0.1

2.8 ±0.1

2.8 ±0.1

2.8 ±0.1

2.8 ±0.1

2.8 ±0.1

2.8 ±0.1

2.8 ±0.1

2.8 ±0.1

2.8 ±0.1

2.8 ±0.1

2.8 ±0.1

2.8 ±0.1

2.8 ±0.1

2.8 ±0.1

2.8 ±0.1

NOTE

PROVIDE LAND SO THAT FLANGE PORTION OF THE CONNECTOR CAN BE PUT.

TOLERANCES
UNLESS OTHERWISE SPECIFIED: ±0.3

MATERIAL

INSULATOR : PPS RESIN GLASS REINFORCED (UL94V-0)

COLOR : BLACK

CONTACT : PHOSPHOR BRONZE

SCREW NUT : STAINLESS

NO. OF CONTACTS : 50/ROW X 2 ROWS (MATING SIDE)

CONTACT PLATING TABLE

[THICKNESS : μm]

CONTACT AREA	REMAINDER
GOLD 0.25 MIN.	SOLDER
OVER NICKEL 3Z	OVER NICKEL

PRINTED CIRCUIT CONNECTOR SURFACE MOUNT TYPE

CAT. NO. PHEC100RT-S21

DRAWING NO. JSC 91839 REV. 0

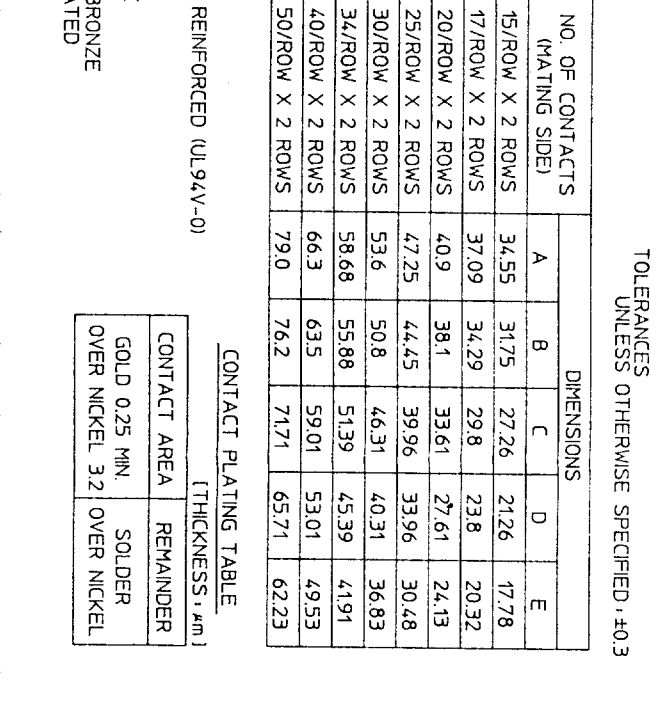
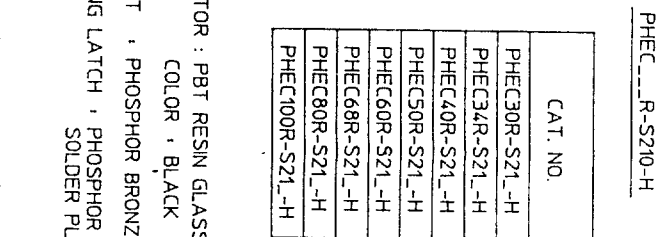
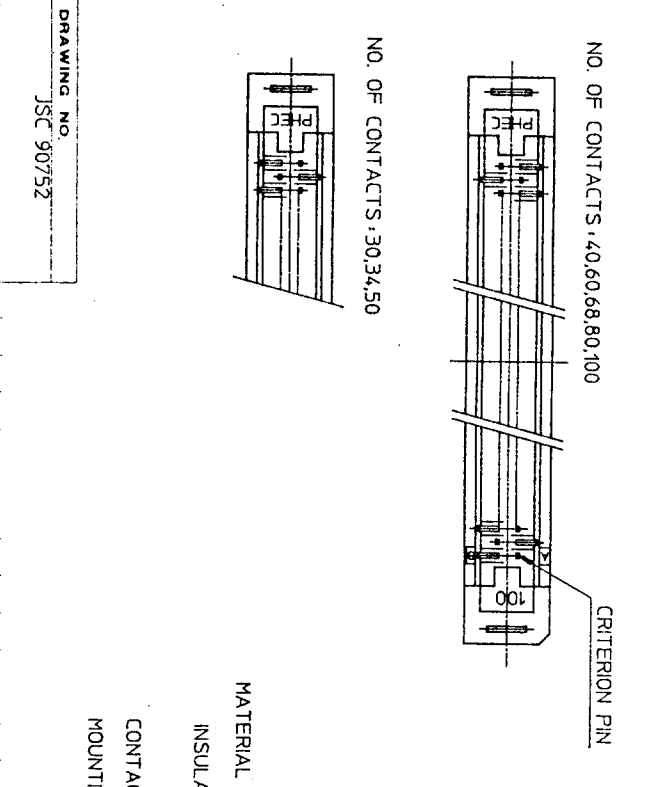
BURNDY JAPAN, Ltd.

DESIGNED
DRAWN
CHECKED
APPROVED
DATE Aug. 11, 1992

SCALE
DIM. IN
MATERIAL

REV.	DATE	DESCRIPTION	CHKD.

DRAWING NO. JSC 91839



CAT. NO.	NO. OF CONTACTS (MATING SIDE)	DIMENSIONS				
		A	B	C	D	E
PHEC30R-S21-H	15/ROW X 2 ROWS	34.55	31.75	27.26	21.26	17.78
PHEC34R-S21-H	17/ROW X 2 ROWS	37.09	34.29	29.8	23.8	20.32
PHEC40R-S21-H	20/ROW X 2 ROWS	40.9	38.1	33.61	27.61	24.13
PHEC50R-S21-H	25/ROW X 2 ROWS	47.25	44.45	39.96	33.96	30.48
PHEC60R-S21-H	30/ROW X 2 ROWS	53.6	50.8	46.31	40.31	36.83
PHEC68R-S21-H	34/ROW X 2 ROWS	58.68	55.88	51.39	45.39	41.91
PHEC80R-S21-H	40/ROW X 2 ROWS	66.3	63.5	59.01	53.01	49.53
PHEC100R-S21-H	50/ROW X 2 ROWS	79.0	76.2	71.71	65.71	62.23

RECOMMENDED PC BOARD THICKNESS: 1.6 ± 0.2
HOLE PATTERN (COMPONENT SIDE)
NO. OF CONTACTS: 40,60,68,80,100

NOTE: THROUGH-HOLES FOR MOUNTING LATCHES ALSO SHOULD BE PLATED.

TOLERANCES UNLESS OTHERWISE SPECIFIED: ±0.3

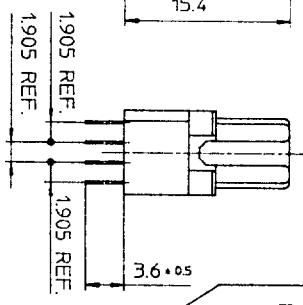
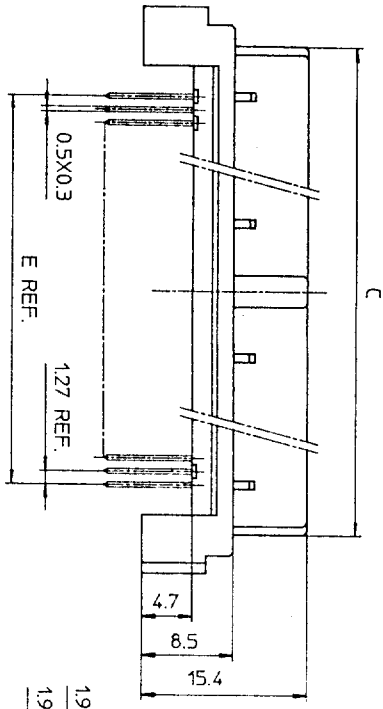
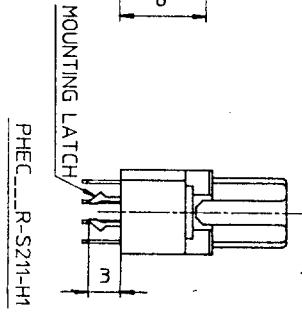
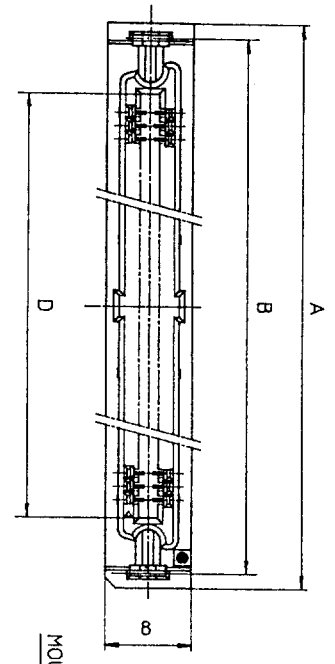
NO. OF CONTACTS: 30,34,50

INSULATOR: PBT RESIN GLASS REINFORCED (UL94V-0)
COLOR: BLACK
CONTACT: PHOSPHOR BRONZE
MOUNTING LATCH: PHOSPHOR BRONZE
SOLDER PLATED

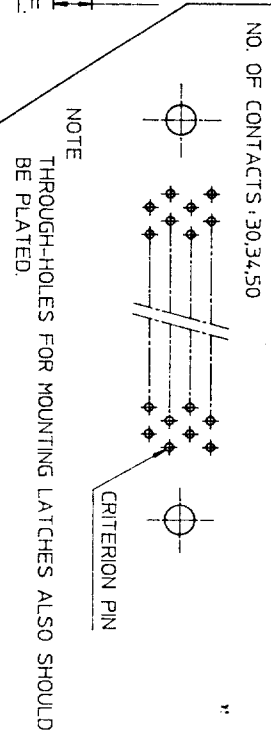
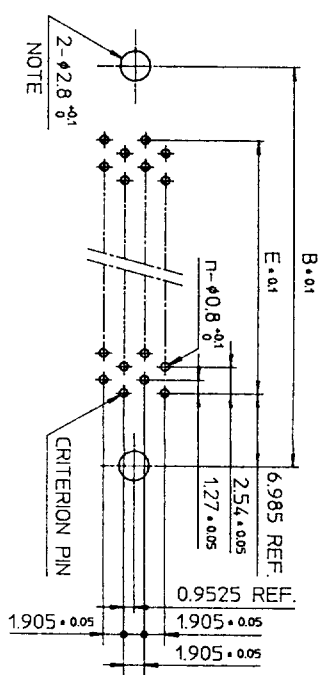
REV	DATE	DESCRIPTION	CKD.
5	'93 6-22	100 POSITIONS ADDED.	M.O
4	'93 2-1	WRONG CONTACT DIM. CORRECTED.	S.O
3	'92 8-11	100,120 POSITIONS DELETED. 30,34,50,68 POSITIONS ADDED.	S.O
2	'90 5-30	DIM. CHANGED (36.61 → 33.61)	J.K
1	'90 5-14	EC 7866	HE

SCALE	DESIGNED	CAT. NO.
DIM IN	DRAWN	PHEC__R-S21-H
MATERIAL	CHECKED	DRAWING NO.
	APPROVED	JSC 90752
	DATE	5
		PRINTED CIRCUIT CONNECTOR HIGH STAND OFF TYPE

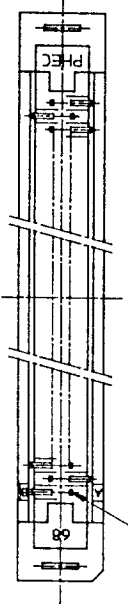




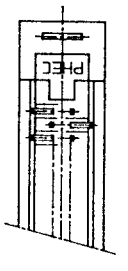
RECOMMENDED PC BOARD
THICKNESS: 1.6 ± 0.2
HOLE PATTERN (COMPONENT SIDE)
NO. OF CONTACTS: 40,60,68



NO. OF CONTACTS: 40,60,68



NO. OF CONTACTS: 30,34,50



CAT. NO.	NO. OF CONTACTS (MATING SIDE)	DIMENSIONS				
		A	B	C	D	E
PHEC30R-S21-H1	15/ROW X 2 ROWS	34.55	31.75	27.26	21.26	17.78
PHEC34R-S21-H1	17/ROW X 2 ROWS	37.09	34.29	29.8	23.8	20.32
PHEC40R-S21-H1	20/ROW X 2 ROWS	40.9	38.1	33.61	27.61	24.13
PHEC50R-S21-H1	25/ROW X 2 ROWS	47.25	44.45	39.96	33.96	30.48
PHEC60R-S21-H1	30/ROW X 2 ROWS	53.6	50.8	46.31	40.31	36.83
PHEC68R-S21-H1	34/ROW X 2 ROWS	58.68	55.88	51.39	45.39	41.91

TOLERANCES
UNLESS OTHERWISE SPECIFIED: ±0.3

MATERIAL

INSULATOR: PBT RESIN GLASS REINFORCED (UL94V-0)

COLOR: BLACK

CONTACT: PHOSPHOR BRONZE

MOUNTING LATCH: PHOSPHOR BRONZE
SOLDER PLATED

CONTACT PLATING TABLE

CONTACT AREA	REMAINDER
GOLD 0.25 MIN.	SOLDER
OVER NICKEL 3.2	OVER NICKEL

DRAWING NO. JSC 91840

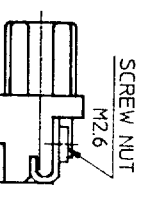
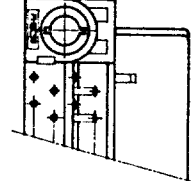
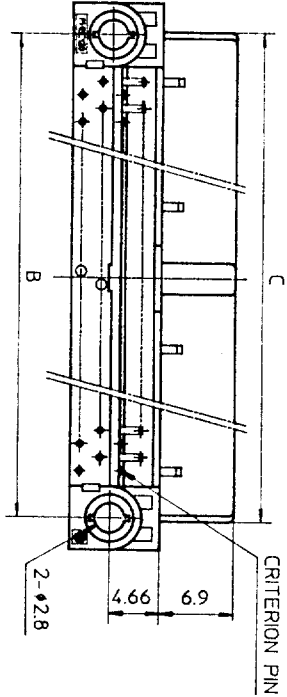
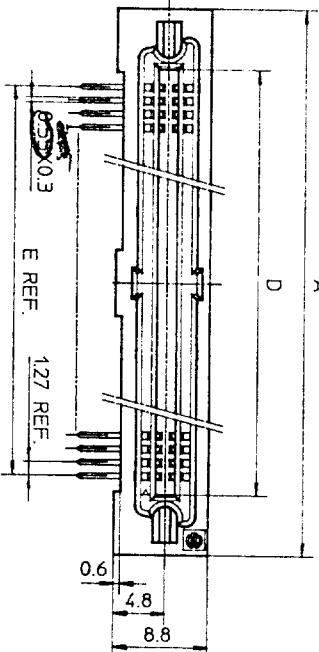
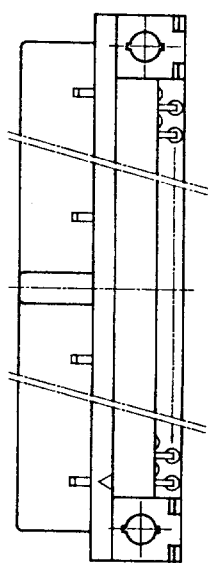
PRINTED CIRCUIT CONNECTOR
HIGH STAND OFF TYPE
CAT. NO. PHEC_R-S21-H1
DRAWING NO. JSC 91840
REV. 1

BURNDY
JAPAN, Ltd.

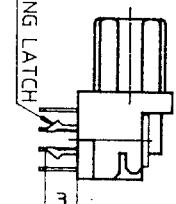
DESIGNED
DRAWN *M. Oba*
CHECKED A. matsuo
APPROVED *S. Ito*
DATE Aug. 17, 1992

SCALE
DIM IN mm
MATERIAL

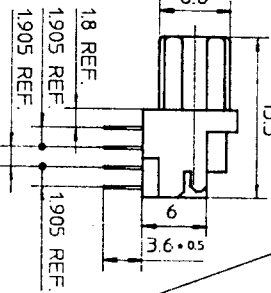
REV. DATE	DESCRIPTION	CKD
1 93	WRONG CONTACT DIM. CORRECTED.	
2-1		



SCREW NUT
M26



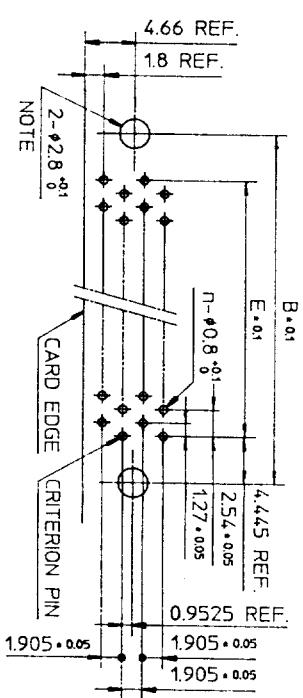
MOUNTING LATCH
PHEC...R-R211



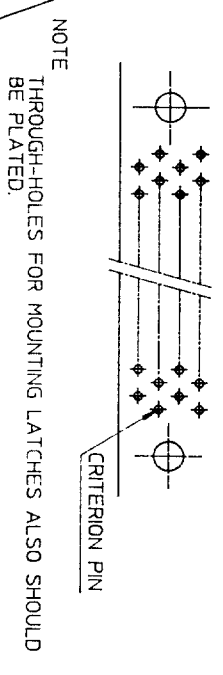
CRITERION PIN
PHEC...R-R210

RECOMMENDED P.C. BOARD
THICKNESS: 1.6^{±0.2}
HOLE PATTERN (COMPONENT SIDE)
NO. OF CONTACTS: 40,60,68,80,100,120

n : NO. OF CONTACTS



NO. OF CONTACTS: 30,34,50



NOTE
THROUGH-HOLES FOR MOUNTING LATCHES ALSO SHOULD BE PLATED.

TOLERANCES
UNLESS OTHERWISE SPECIFIED: ±0.3

CAT. NO.	NO. OF CONTACTS (MATING SIDE)	DIMENSIONS				
		A	B	C	D	E
PHEC30R-R21	15/ROW X 2 ROWS	32.67	26.67	27.26	21.26	17.78
PHEC34R-R21	17/ROW X 2 ROWS	35.21	29.21	29.8	23.8	20.32
PHEC40R-R21	20/ROW X 2 ROWS	39.02	33.02	33.61	27.61	24.13
PHEC50R-R21	25/ROW X 2 ROWS	45.37	39.37	39.96	33.96	30.48
PHEC60R-R21	30/ROW X 2 ROWS	51.72	45.72	46.31	40.31	36.83
PHEC68R-R21	34/ROW X 2 ROWS	56.8	50.8	51.39	45.39	41.91
PHEC80R-R21	40/ROW X 2 ROWS	64.42	58.42	59.01	53.01	49.53
PHEC100R-R21	50/ROW X 2 ROWS	77.12	71.12	71.71	65.71	62.23
PHEC120R-R21	60/ROW X 2 ROWS	89.82	83.82	84.41	78.41	74.93

CONTACT PLATING TABLE
(THICKNESS: μm)

CONTACT AREA	REMAINDER
GOLD 0.25 MIN. OVER NICKEL 3.2	SOLDER OVER NICKEL

NO. OF CONTACTS: 30,34,50

MATERIAL

BODY : PBT RESIN GLASS REINFORCED (UL94V-0)
LOCATOR COLOR : BLACK
CONTACT : PHOSPHOR BRONZE
MOUNTING LATCH : PHOSPHOR BRONZE
SCREW NUT : STEEL
NICKEL PLATED

DRAWING NO.
JSC 90738

PRINTED CIRCUIT CONNECTOR
CAT. NO. PHEC...R-R21
DRAWING NO. JSC 90738
REV. 3
BURNDY JAPAN, Ltd.

DESIGNED
DRAWN *M. Oba*
CHECKED *A. Oba*
APPROVED *T. Ogasawara*
DATE Mar. 8, 1990

SCALE
DIM. IN mm
MATERIAL

REV.	DATE	DESCRIPTION	CKD
3	92-8-11	30,34,50,68 POSITIONS ADDED.	<i>M. Oba</i>
2	90-6-8	EC 7866	<i>A. Oba</i>
1	90-4-20	EC 7837	<i>A. Oba</i>